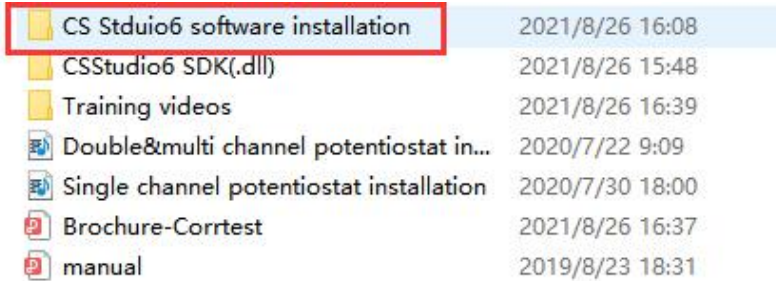


## Installation guide for CS single channel models

1. Use the USB cable to connect the potentiostat with a computer.

2. Power on the instrument, open the “software



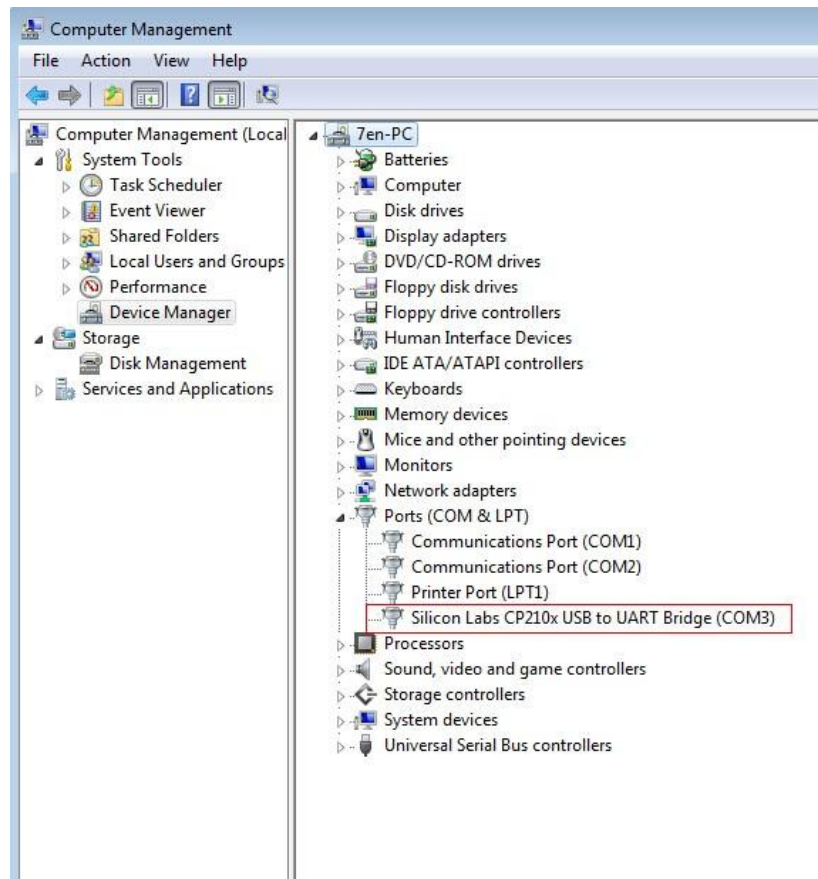
installatio

n” folder in

the USB flash disk., right click the “CS studio6 setup”, and run as administrator.



3. Firstly, install the drivers. After finishing it, go to the computer management → device manager → Ports (COM & LPT). There, it will appear “Silicon Labs CP210x USB to UART Bridge(COM x)”. As is shown below, the X is 3.



4. Secondly, install the runtime environment. If your computer has already installed it, there will be a prompt saying you have already installed.

If it hasn't been installed in your computer, just follow the steps to finish installation of runtime.

5. Click install CS Studio6. Created a shortcut is on the desktop.



6. Run the software as administrator. Then the model and serial number will be shown on the top of the software. It means the instrument has been successfully connected.